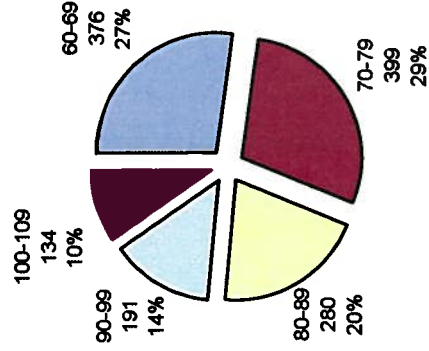


Spring 2006 Arts and Sciences Graduates and their Upper Division Credit Hours

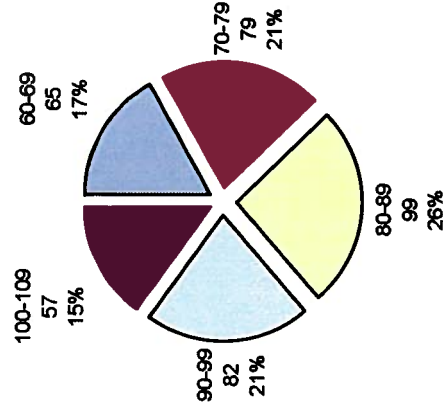
Breakdown by Degree and Limited to 60-109 Upper Division Credit Hours

Upper Division Credit Hours	B.A. IN JOURNALISM	B.S. DESIGN	BACHELOR OF MUSIC EDUCATION	BACHELOR OF ART EDUCATION	BACHELOR OF ARTS	BACHELOR OF FINE ARTS	BACHELOR OF MUSIC	BACHELOR OF SCIENCE
60-69	14	2			362			63
70-79	11	5			387		1	74
80-89	6	21			272	1	1	78
90-99	6	11	7	1	169	4	4	71
100-109	3	4	7	7	105	11	1	53

BA



BS



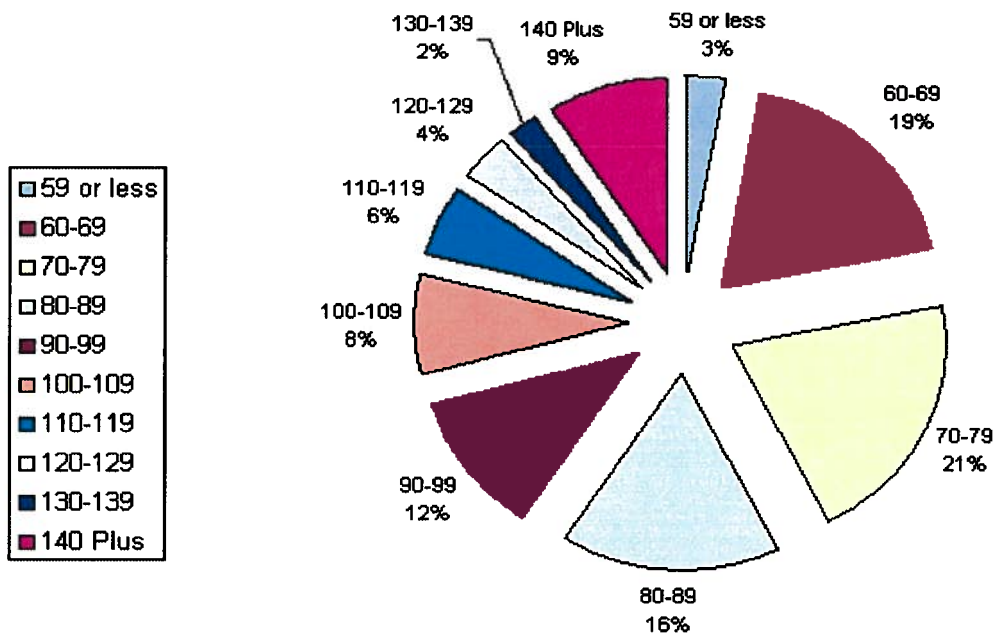
Upper Division Courses are defined as all courses at the 300 level or above, Philosophy 250, all courses taught by the College of Mathematical and Physical Sciences at the 200 level, and foreign language courses taught in the language at the 200 level.



Spring 2006 Arts and Sciences Graduates and their Upper Division Credit Hours

upper division credit hours	count of students	percent of total grads
59 or less	71	3%
60-69	441	19%
70-79	479	21%
80-89	380	16%
90-99	273	12%
100-109	191	8%
110-119	137	6%
120-129	93	4%
130-139	48	2%
140 Plus	214	9%

Total Arts and Sciences Graduates 2327



Upper Division Courses are defined as all courses at the 300 level or above, Philosophy 250, all courses taught by the College of Mathematical and Physical Sciences at the 200 level, and foreign language courses taught in the language at the 200 level.

Spring 2006 Arts and Sciences Graduates and their Upper Division Credit Hours

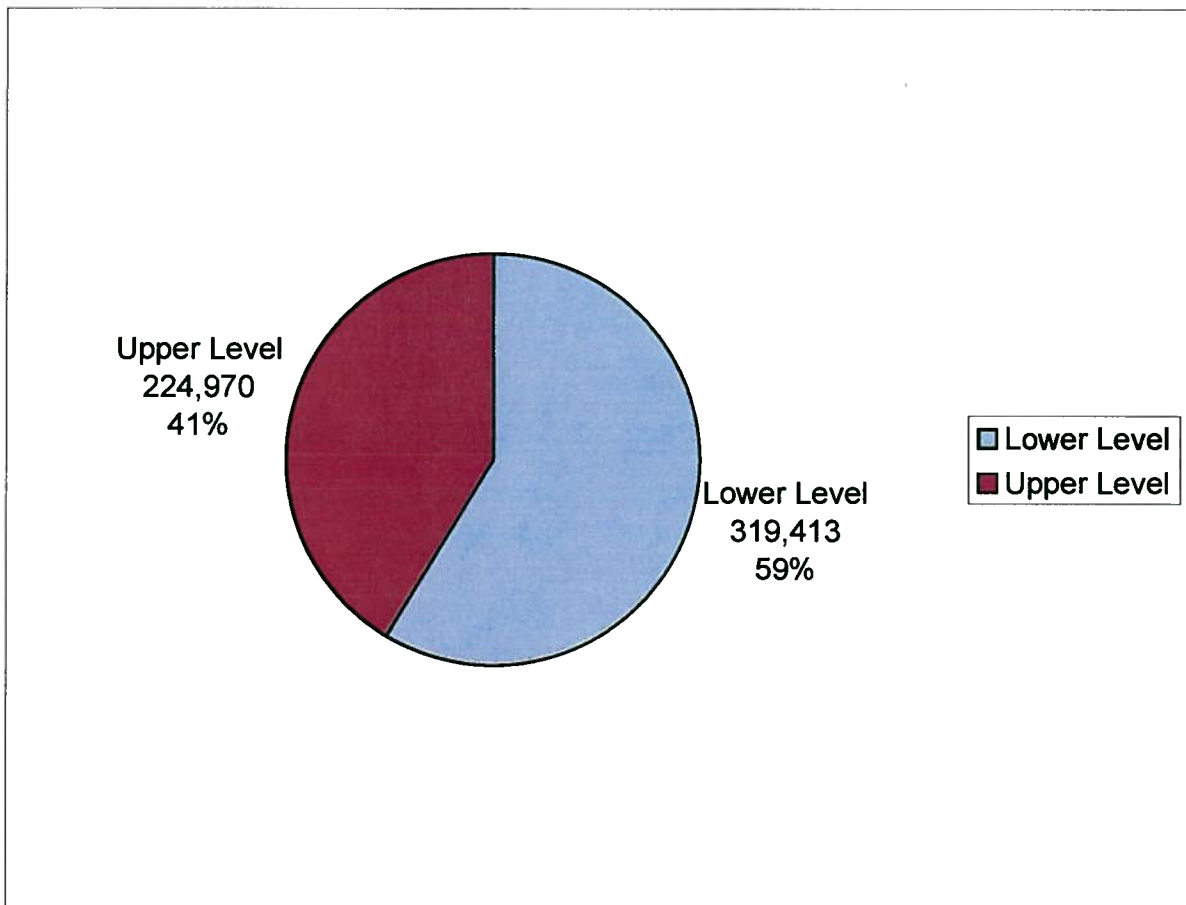
Breakdown by Major (Selected ASC Majors) and Limited to 60-109 Upper Division Credit Hours

upper division credit hours	BIOLOGY	CHEMISTRY	COMMUNICATION	CRIMINOLOGY	ECONOMICS	ENGLISH	HISTORY	INTERNATIONAL STUDIES	POLITICAL SCIENCE	PSYCHOLOGY	SOCIOLOGY	SPANISH	THEATRE	Grand Total
100-109	11	3	10	4	2	12	10	9	12	28	4	5		110
60-69	27	1	99	22	16	62	16	15	33	26	15		3	335
70-79	19	7	73	23	13	36	29	19	35	64	25	2	5	350
80-89	24		42	30	5	17	20	16	25	42	16	5	2	244
90-99	20	4	11	11	5	12	18	9	14	36	9	4	2	155
Grand Total	101	15	235	90	41	139	93	68	119	196	69	16	12	1194

Upper Division Courses are defined as all courses at the 300 level or above, Philosophy 250, all courses taught by the College of Mathematical and Physical Sciences at the 200 level, and foreign language courses taught in the language at the 200 level.

Credit Hours of Coursework at the Upper and Lower Level - Spring 2006 Arts and Sciences Graduates

	total
Lower Level	319,413
Upper Level	224,970
All coursework	544,383
Lower level coursework/ percentage of all coursework	58.67%



Lower Division Courses are defined as all courses at the 100 or 200 level, except for Philosophy 250, all courses taught by the College of Mathematical and Physical Sciences at the 200 level, and foreign language courses taught in the language at the 200 level.

CCI Handout: Upper Division GEC Course List 3-7-08

Course Academic Dept Number	Course Academic Dept Abbv	Course Number No Suffix	Course Number Main	Course GEC Flag	Upper-Lwr
022	AED ECON	59701	597	Y	U
022	AED ECON	H59701	597	Y	U
025	AEE	387	387	Y	U
079	AFAM&AST	345	345	Y	U
079	AFAM&AST	551	551	Y	U
079	AFAM&AST	36703	367	Y	U
079	AFAM&AST	36704	367	Y	U
079	AFAM&AST	48501	485	Y	U
572	AGR COMM	367	367	Y	U
025	AGR EDUC	387	387	Y	U
045	ALLI MED	307	307	Y	U
056	ANIM SCI	310	310	Y	U
056	ANIM SCI	597	597	Y	U
056	ANIM SCI	H310	310	Y	U
060	ANTHROP	42108	421	Y	U
060	ANTHROP	59701	597	Y	U
060	ANTHROP	59702	597	Y	U
064	ARABIC	367	367	Y	U
064	ARABIC	372	372	Y	U
064	ARABIC	H372	372	Y	U
065	ARCH	426	426	Y	U
065	ARCH	441	441	Y	U
065	ARCH	442	442	Y	U
066	ART	340	340	Y	U
066	ART	440	440	Y	U
066	ART	455	455	Y	U
066	ART	30001	300	Y	U
066	ART	30002	300	Y	U
066	ART	H30002	300	Y	U
066	ART	H340	340	Y	U
066	ART	H455	455	Y	U
067	ART EDUC	36701	367	Y	U
067	ART EDUC	36702	367	Y	U
067	ART EDUC	36703	367	Y	U
067	ART EDUC	H36701	367	Y	U
068	ARTS&SCI	494	494	Y	U
068	ARTS&SCI	500	500	Y	U
075	BIOLOGY	597	597	Y	U
103	C&R PLAN	597	597	Y	U
100	CHEM	221	221	Y	U
100	CHEM	H201	201	Y	U
100	CHEM	H202	202	Y	U
100	CHEM	H203	203	Y	U
100	CHEM	H221	221	Y	U
101	CHINESE	210	210	Y	U
101	CHINESE	503	503	Y	U

CCI Handout: Upper Division GEC Course List 3-7-08

114	COMM	367	367	Y	U
114	COMM	431	431	Y	U
114	COMM	59701	597	Y	U
115	COMP STD	301	301	Y	U
115	COMP STD	305	305	Y	U
115	COMP STD	306	306	Y	U
115	COMP STD	308	308	Y	U
115	COMP STD	336	336	Y	U
115	COMP STD	358	358	Y	U
115	COMP STD	376	376	Y	U
115	COMP STD	36701	367	Y	U
115	COMP STD	36702	367	Y	U
115	COMP STD	36703	367	Y	U
115	COMP STD	59701	597	Y	U
115	COMP STD	59702	597	Y	U
115	COMP STD	H301	301	Y	U
115	COMP STD	H36701	367	Y	U
115	COMP STD	H36702	367	Y	U
646	CON SCI	340	340	Y	U
131	DANCE	357	357	Y	U
131	DANCE	H36701	367		U
132	DENT HYG	383	383	Y	U
140	ECON	348	348	Y	U
140	ECON	443	443	Y	U
140	ECON	515	515	Y	U
140	ECON	516	516	Y	U
140	ECON	36701	367	Y	U
140	ECON	36702	367	Y	U
144	EDU P&L	411	411	Y	U
492	EEOB	59702	597	Y	U
173	ENGINEER	367	367	Y	U
181	ENGLISH	364	364	Y	U
181	ENGLISH	378	378	Y	U
181	ENGLISH	597	597	Y	U
181	ENGLISH	36701	367	Y	U
181	ENGLISH	36702	367	Y	U
181	ENGLISH	36703	367	Y	U
181	ENGLISH	36704	367	Y	U
181	ENGLISH	36705	367	Y	U
181	ENGLISH	36706	367	Y	U
181	ENGLISH	H36701	367	Y	U
308	ENR	367	367	Y	U
308	ENR	400	400	Y	U
308	ENR	567	567	Y	U
308	ENR	30001	300	Y	U
308	ENR	30002	300	Y	U
308	ENR	59702	597	Y	U
182	FD SC&TE	59701	597	Y	U
182	FD SC&TE	59702	597	Y	U
223	FM RES M	340	340	Y	U
200	GEOG	400	400	Y	U

CCI Handout: Upper Division GEC Course List 3-7-08

200	GEOG	430	430	Y	U
200	GEOG	450	450	Y	U
200	GEOG	460	460	Y	U
200	GEOG	59701	597	Y	U
200	GEOG	H410	410	Y	U
200	GEOG	H460	460	Y	U
206	GERMAN	367	367	Y	U
206	GERMAN	399	399	Y	U
209	GREEK	210	210	Y	U
209	GREEK	221	221	Y	U
209	GREEK	223	223	Y	U
209	GREEK	224	224	Y	U
331	H&CS	300	300	Y	U
331	H&CS	597	597	Y	U
187	HDFS	360	360	Y	U
187	HDFS	361	361	Y	U
187	HDFS	364	364	Y	U
187	HDFS	367	367	Y	U
214	HEBREW	370	370	Y	U
214	HEBREW	372	372	Y	U
214	HEBREW	373	373	Y	U
214	HEBREW	374	374	Y	U
214	HEBREW	376	376	Y	U
214	HEBREW	378	378	Y	U
216	HIST ART	305	305	Y	U
216	HIST ART	306	306	Y	U
216	HIST ART	315	315	Y	U
216	HIST ART	340	340	Y	U
216	HIST ART	345	345	Y	U
216	HIST ART	350	350	Y	U
216	HIST ART	360	360	Y	U
216	HIST ART	505	505	Y	U
216	HIST ART	520	520	Y	U
216	HIST ART	576	576	Y	U
215	HISTORY	306	306	Y	U
215	HISTORY	325	325	Y	U
215	HISTORY	346	346	Y	U
215	HISTORY	597	597	Y	U
215	HISTORY	33001	330	Y	U
240	INT STDS	356	356	Y	U
240	INT STDS	443	443	Y	U
240	INT STDS	59701	597	Y	U
240	INT STDS	59702	597	Y	U
240	INT STDS	H59701	597	Y	U
248	JAPANESE	210	210	Y	U
248	JAPANESE	211	211	Y	U
255	LARCH	367	367	Y	U
255	LARCH	597	597	Y	U
255	LARCH	663	663	Y	U
262	LINGUIST	301	301	Y	U
262	LINGUIST	303	303	Y	U

CCI Handout: Upper Division GEC Course List 3-7-08

262	LINGUIST	367	367	Y	U
262	LINGUIST	371	371	Y	U
262	LINGUIST	372	372	Y	U
262	LINGUIST	375	375	Y	U
262	LINGUIST	384	384	Y	U
262	LINGUIST	59701	597	Y	U
262	LINGUIST	H371	371	Y	U
262	LINGUIST	H372	372	Y	U
262	LINGUIST	H384	384	Y	U
298	MDRN GRK	367	367	Y	U
298	MDRN GRK	371	371	Y	U
285	MICRBIOL	509	509	Y	U
305	MUSIC	341	341	Y	U
305	MUSIC	342	342	Y	U
305	MUSIC	348	348	Y	U
305	MUSIC	34501	345	Y	U
251	NELC	345	345	Y	U
251	NELC	351	351	Y	U
251	NELC	372	372	Y	U
315	NURSING	367	367	Y	U
080	PCMB	300	300	Y	U
352	PERSIAN	370	370	Y	U
365	PHILOS	250	250	Y	U
365	PHILOS	301	301	Y	U
365	PHILOS	302	302	Y	U
365	PHILOS	303	303	Y	U
365	PHILOS	306	306	Y	U
365	PHILOS	307	307	Y	U
365	PHILOS	336	336	Y	U
365	PHILOS	367	367	Y	U
380	PHYSICS	367	367	Y	U
380	PHYSICS	416	416	Y	U
380	PHYSICS	H455	455	Y	U
080	PLNT BIO	300	300	Y	U
392	PLNT PTH	597	597	Y	U
395	POLIT SC	585	585	Y	U
395	POLIT SC	36701	367	Y	U
395	POLIT SC	59701	597	Y	U
395	POLIT SC	59702	597	Y	U
395	POLIT SC	H585	585	Y	U
400	PORTGESE	330	330	Y	U
400	PORTGESE	501	501	Y	U
400	PORTGESE	502	502	Y	U
420	PSYCH	371	371	Y	U
420	PSYCH	375	375	Y	U
420	PSYCH	394	394	Y	U
420	PSYCH	646	646	Y	U
420	PSYCH	36701	367	Y	U
420	PSYCH	59701	597	Y	U
420	PSYCH	59702	597	Y	U
420	PSYCH	59703	597	Y	U

CCI Handout: Upper Division GEC Course List 3-7-08

420	PSYCH	H371	371	Y	U
430	RURL SOC	378	378	Y	U
435	RUSSIAN	360	360	Y	U
443	SCANDNAV	520	520	Y	U
438	SLAVIC	367	367	Y	U
440	SOC WORK	300	300	Y	U
440	SOC WORK	301	301	Y	U
440	SOC WORK	570	570	Y	U
440	SOC WORK	597	597	Y	U
445	SOCIOL	306	306	Y	U
445	SOCIOL	345	345	Y	U
445	SOCIOL	370	370	Y	U
445	SOCIOL	380	380	Y	U
445	SOCIOL	435	435	Y	U
445	SOCIOL	463	463	Y	U
445	SOCIOL	467	467	Y	U
445	SOCIOL	549	549	Y	U
445	SOCIOL	608	608	Y	U
445	SOCIOL	36702	367	Y	U
445	SOCIOL	59701	597	Y	U
445	SOCIOL	59702	597	Y	U
445	SOCIOL	H36701	367	Y	U
445	SOCIOL	H36703	367	Y	U
445	SOCIOL	H463	463	Y	U
445	SOCIOL	H549	549	Y	U
450	SPANISH	320	320	Y	U
450	SPANISH	321	321	Y	U
450	SPANISH	322	322	Y	U
450	SPANISH	330	330	Y	U
450	SPANISH	331	331	Y	U
450	SPANISH	367	367	Y	U
450	SPANISH	380	380	Y	U
450	SPANISH	520	520	Y	U
454	SPH&HRNG	310	310	Y	U
454	SPH&HRNG	330	330	Y	U
454	SPH&HRNG	350	350	Y	U
458	STAT	245	245	Y	U
458	STAT	427	427	Y	U
458	STAT	520	520	Y	U
465	THEATRE	597	597	Y	U
465	THEATRE	36701	367	Y	U
465	THEATRE	36702	367	Y	U
465	THEATRE	H36701	367	Y	U
462	TXTL&CLO	372	372	Y	U
493	WOM STDS	317	317	Y	U
493	WOM STDS	370	370	Y	U
493	WOM STDS	372	372	Y	U
493	WOM STDS	505	505	Y	U
493	WOM STDS	510	510	Y	U
493	WOM STDS	36701	367	Y	U
493	WOM STDS	36704	367	Y	U

CCI Handout: Upper Division GEC Course List 3-7-08

493	WOM STDS	H372	372	Y	U
494	YIDDISH	367	367	Y	U
494	YIDDISH	371	371	Y	U
494	YIDDISH	399	399	Y	U